



# Webb-Stiles Enclosed Track

Webb-Stiles Enclosed Track Conveyors utilize the Universal Enclosed Track Chain and many industry standard components for enclosed track conveyors.

Enclosed Track Conveyors are cost effective for moving light loads in many different environments. Many unique configurations can be incorporated and Enclosed Track Systems are relatively easy to install.



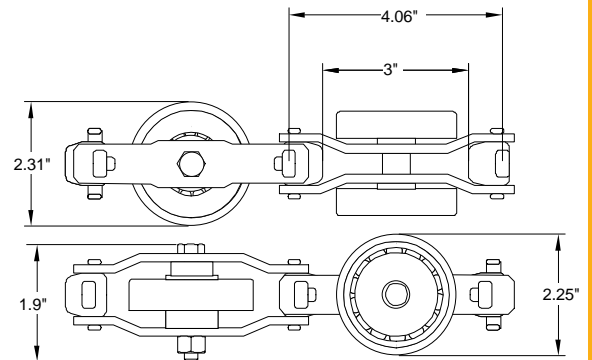
© 2002 Webb-Stiles Co. All rights reserved.

## WEBB-STILES - Enclosed Track Chain

Flexibility and strength is in this universal link chain. Available in 20 ft. 3-3/4" lengths and easily assembled with common tools. Manufactured to remain assembled when in use. Flex 90 degree, remove bolt, lift off links when desired. Heavy-Duty wheels only.

Chain Specifications:

- \* Continuous duty 400 degree F.
- \* Intermittent duty 450 degree F.
- \* Maximum rated chain pull is 750 pounds
- \* Chain ultimate tensile strength exceeds 10,000 pounds
- \* Rated capacity for Load Wheel 125 pounds
- \* Rated capacity for Guide Wheel 200 pounds
- \* Weight of chain per foot 3.65 pounds
- \* Weight of chain per strand 73 pounds
- \* 8" Nominal Pitch and Load Centers



## WEBB-STILES - Standard Track Curves

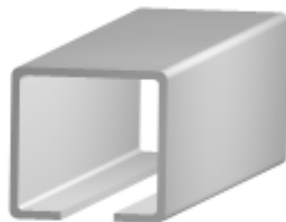
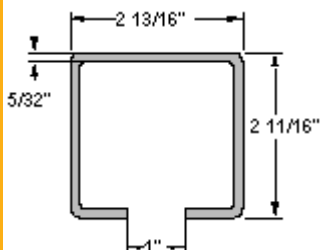
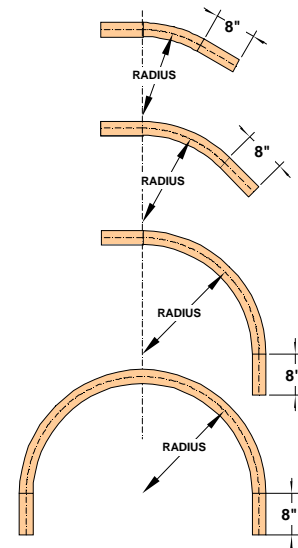
All Webb-Stiles horizontal turns are available in 24" and 36" radii. Turns are fabricated with 8" of straight track at tangents. Special heat treated areas for tough anti-wear life. For smaller than 24" radius use special traction wheels available in 18", 24", 30" and 36" PD. Graphalloy bushings are available for oven applications.

30 degree Horizontal Turns, 24", 36" radius

45 degree Horizontal Turns, 24", 36" radius

90 degree Horizontal Turn, 24", 36", 48" radius

180 degree Horizontal Turns, 24", 36" radius



## WEBB-STILES - Enclosed Track

Formed with high strength steel for long life and low maintenance. Available in 20 foot sections. Easily cut and welded in the field. Painted Webb-Stiles Blue. 4.8 pounds per foot.

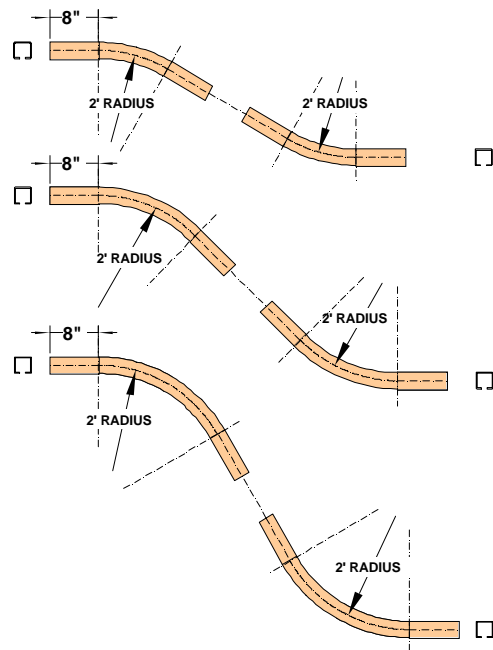


# Webb-Stiles Enclosed Track

## WEBB-STILES - Standard Vertical Curves

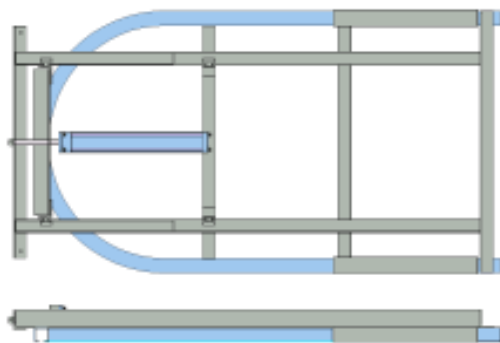
Vertical Curves are available in standard 24" and 36" radii. Heat treated in areas of wheel contact for extra wear ability. Fabricated with 8" of straight track at tangents.

24' radius, 30 degree Upper Vertical Curve	36" radius, 30 degree Upper Vertical Curve
24" radius, 45 degree Upper Vertical Curve	36" radius, 45 degree Upper Vertical Curve
24" radius, 60 degree Upper Vertical Curve	24" radius, 90 degree Upper Vertical Curve
24' radius, 30 degree Lower Vertical Curve	36" radius, 30 degree Lower Vertical Curve
24" radius, 45 degree Lower Vertical Curve	36" radius, 45 degree Lower Vertical Curve
24" radius, 60 degree Lower Vertical Curve	24" radius, 90 degree Lower Vertical Curve



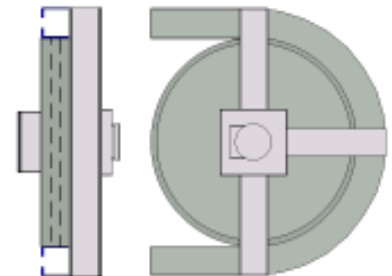
## WEBB-STILES - Chain Take-Up

Chain take-ups are used on all systems to remove any chain slack. Take-ups are available in spring and air operated. Standard radius in 24". Standard travel is 8". Smaller radii are available with the use of traction wheels. Larger radii are available on special order. Longer travel is also available on special order.



## WEBB-STILES - Traction Wheels

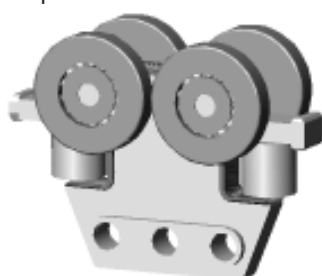
Available in 18", 24", 30" and 36" Pitch Diameter. Also available with Graphalloy Bushings for oven applications. When the radius is to be less than 24", a traction wheel must be used.



## WEBB-STILES - Hand Push Trolley WEBB-STILES - Switches

250 lb. capacity with heavy duty wheels. One piece cast body. Load capacity can be increased using multiple trolleys and a load bar. Has side guide wheels and bumpers.

Frog switches, left or right hand, and universal switches, are available in either manual or automatic versions, for hand push systems.



LEFT HAND

RIGHT HAND

Y-SWITCH

## WEBB-STILES - Over & Under

A full line of over and under components and systems are available. Contact your Webb-Stiles sales engineer.

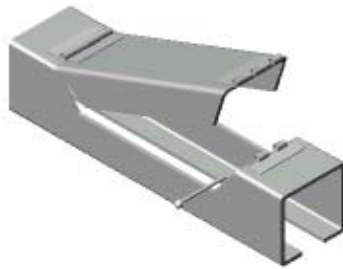




# Webb-Stiles Enclosed Track Accessories

## Inspection Gate

Allows for inspection and maintenance of the conveyor chain. Not to be opened when conveyor is running.



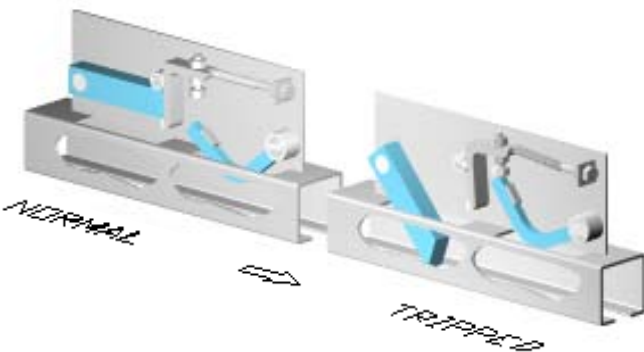
## Oven and Building Expansion Joints

Should be used to compensate for track expansion caused by heat or in line with all building expansion joints.



## Anti-Runaway

Recommended where declines are a 5 foot drop or more. Adjusted to activate when the chain exceeds its designed speed. Premounted to a standard track section.



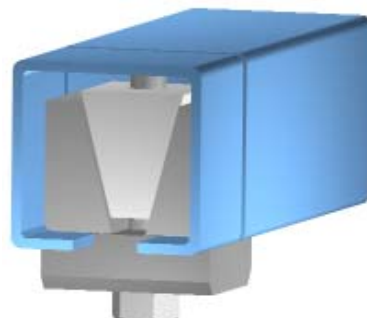
## 4 Wheel Chain Attachment

Increases load capacity to 250lbs. Installed on 8" centers as required. Three styles are available, including inverted style with guide rollers. Heat treated, drop forged for maximum strength.



## Welding Fixture

This fixture holds the track sides and tread in alignment. It is removed after welding.



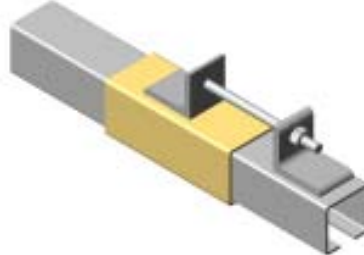
## Installation Gate

One installation gate is required on every conveyor. Normally at exit end of drive. Not to be opened while conveyor is in operation.



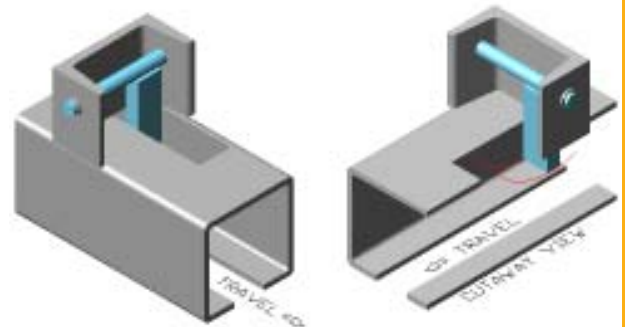
## Take-Up Expansion Joint

Used when a field erected take-up is required. 23" closed, 31" open. Manual screw adjust.



## Anti-Backup

Used on vertical inclines. Will prevent a broken chain from traveling back down hill. Cannot be used on reversing conveyors or on vertical curves where the chain is traveling downward.



## Track Hanger

This component joins the ends of two tracks as a permanent splice. Welding is not necessary. It also can double as a track hanger.

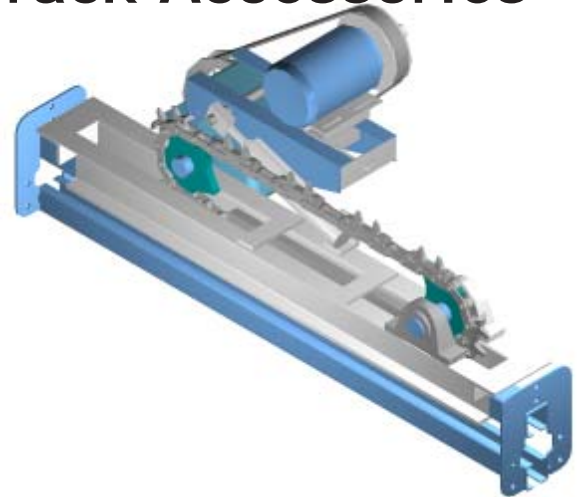




# Webb-Stiles Enclosed Track Accessories

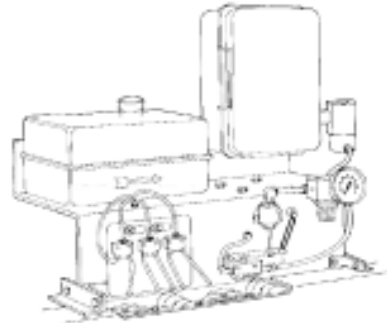
## WEBB-STILES - Caterpillar Drive Units

Caterpillar drives are available in 300# and 600# capacities. Constant or variable speed 3 to 1 ratio. All drives are provided with overload protection and guards. Speeds from 2 to 80FPM are available. Contact product sales for multiple, reversing, inverted, variable frequency, or high speed drives.



## Lubricators

A full line of brush type and automatic lubricators are available. Contact your Webb-Stiles sales engineer.



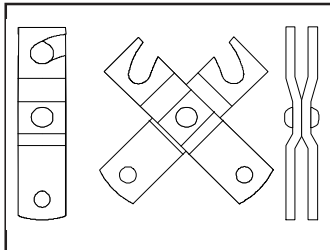
Automatic Type Lubricator

Brush Type Lubricator

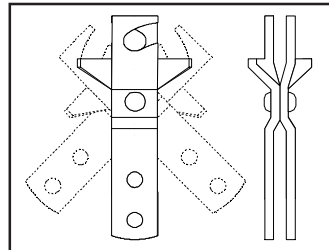


## WEBB-STILES - Chain Load Attachments

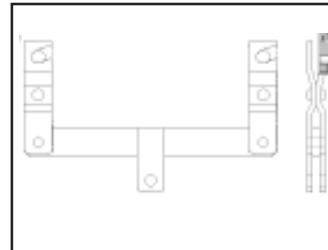
A selection of load carrying attachments are available for suspending a wide variety of carriers and loads from the chain. The attachments below are standard for the industry. Special attachments can be designed for special applications.



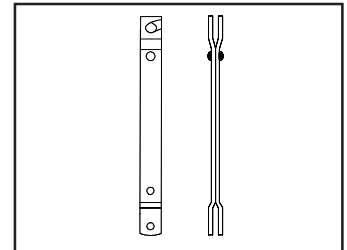
**Standard "H" Attachment**  
Capacity 125 Lbs.  
Max. 45 degree incline.  
Attaches directly to wheel axle.  
Locked in position by carrier clevis bolt.



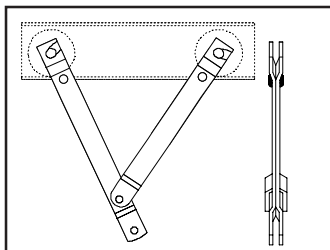
**Rigid "H" Attachment**  
Capacity 75 Lbs.



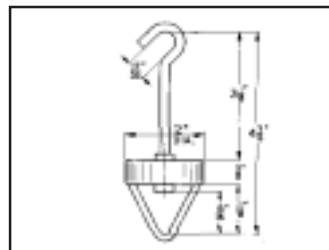
**Load Bar Attachment**  
Capacities:  
250 Lbs. Level Systems  
200 Lbs. 30 degree incline  
175 Lbs. 45 degree incline  
Does not include an "H" attachment.



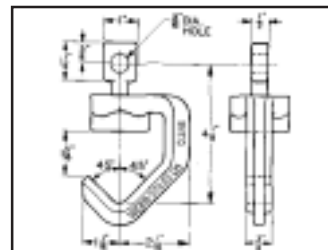
**Extended "H" Attachment**  
Capacity 125 Lbs.  
For added clearance when traveling vertically



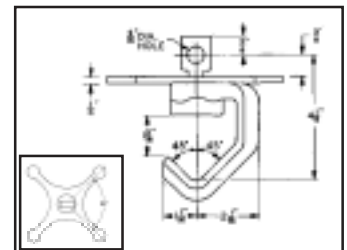
**Extended Rigid "H" Attachment**  
Capacity 125 Lbs.  
Used on conveyors with vertical travel to hold the load away from the track when traveling vertically. 8" or 11" drops.



**Light Duty Swivel Hook**  
Capacity 25 Lbs. maximum on 45 degree incline.



**S-220 Swivel Hook**  
Capacity 125 Lbs.

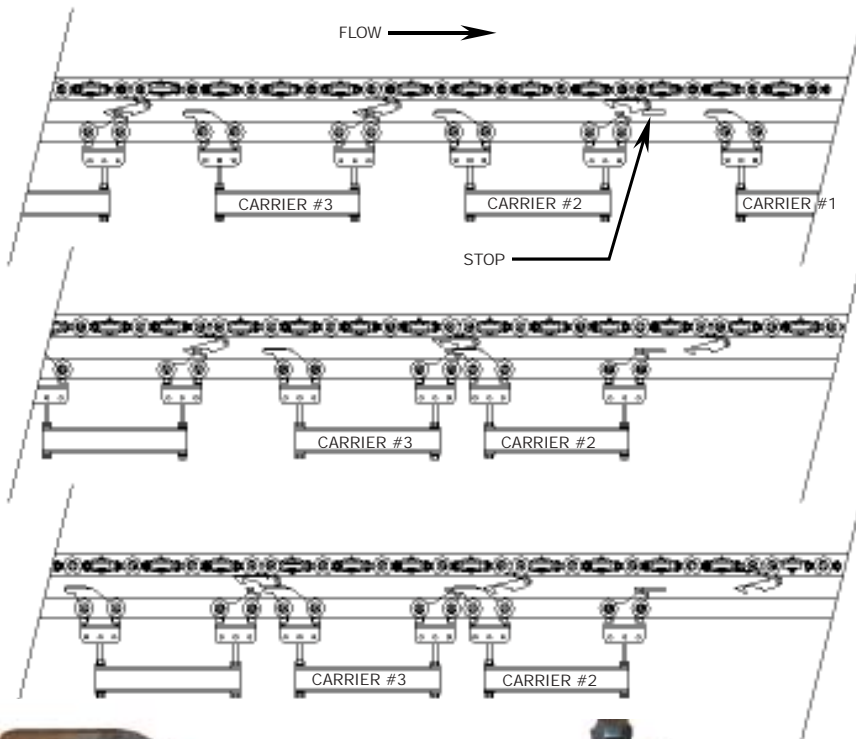


**S-220 Swivel Hook with 90 Degree Index Arms**  
Capacity 125 Lbs.



# Webb-Stiles Enclosed Power & Free

Webb-Stiles Enclosed Track, Power & Free systems feature Universal Enclosed Chain Power Rail and chain. A complete line of components are available. The simplest to the most complex systems can be designed by the Webb-Stiles Engineering Team. A Webb-Stiles Sales Engineer can assist you in planning a Power & Free Conveyor System and give you timely quotations for your needs.



1. Stop blade actuates between carrier 1 & 2, stopping carrier #2. (Note the pusher dog pivots up when encountering the stop, releasing carrier #2). Carrier #1 continues.
2. Carrier #3 lead trolley then encounters carrier #2 trailing trolley again, the pusher dog pivots up releasing carrier #3.
3. All subsequent carriers will accumulate in a similar manner.



Trailing Trolley



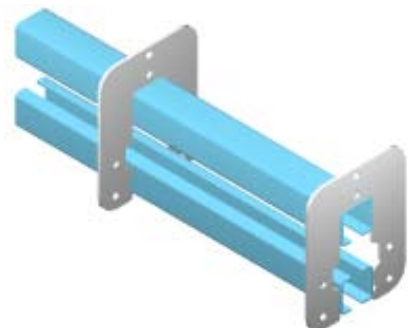
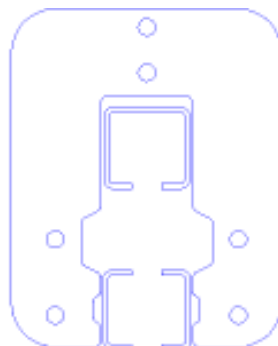
Leading trolley

## WEBB-STILES - Free Carrier Trolleys

Webb-Stiles Free Carriers are a single cast body, machined and hardened with four heavy-duty wheels. Free carrier trolleys are available in Leading and Trailing trolley configurations that allow for accumulation of carriers at stops. 250lb capacity.

## WEBB-STILES - Power and Free Track

Enclosed track power and free is constructed of rolled enclosed track for the power chain and rolled track for the free rail held in place by steel yokes. Heavy-duty 3" has 3' channel held in place by yokes with enclosed track for the power chain. All rolled track is built of high strength steel.

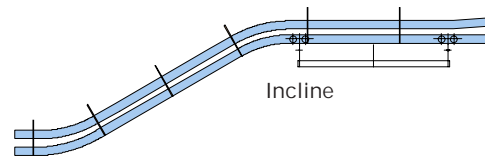
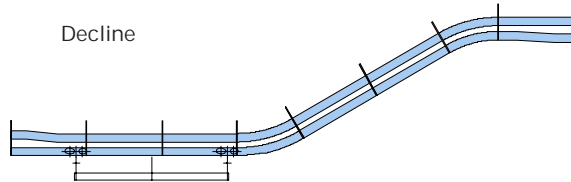
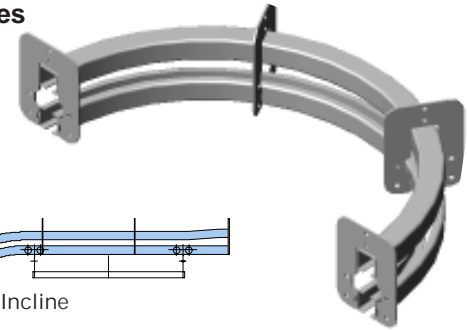




# Webb-Stiles Enclosed Power & Free

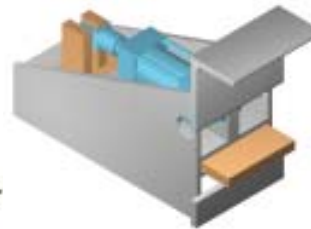
## WEBB-STILES - Power and Free Horizontal Turns and Vertical Inclines

Horizontal Turns are available in a minimum 24" and 36" radius from 15 to 180 degrees. Power & Free Vertical Curves engineered to specifications and built with special drops. Vertical Inclines have a minimum of 36" radius in 30 and 45 degree curves.



## WEBB-STILES - Pusher Dog

Free trolleys are powered by drop forged pusher dogs, attached to the power chain. The pusher dog engages the free trolley and releases it by a stop or when it strikes the "beave tail" of a trailing trolley of a carrier.



## WEBB-STILES - Carrier Stop

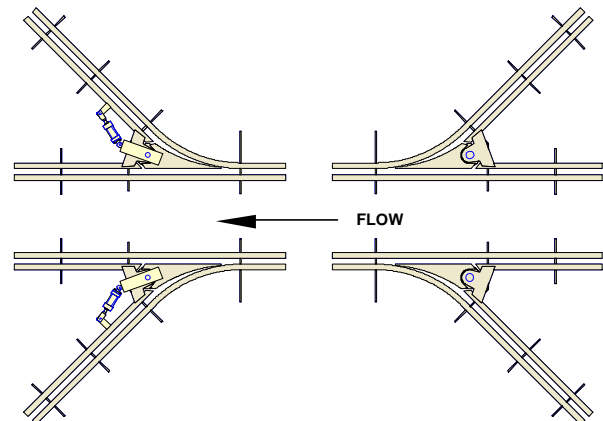
Stops are used to stop a free carrier at a work station, accumulation zone, or for traffic control. The stop can be automatically or manually operated. Trailing carriers will accumulate behind the stopped carrier.

## WEBB-STILES - Drives/Take-ups

See Enclosed Track section for Caterpillar Drive and Take-up information.

## WEBB-STILES - Switches

Two types of switches are used in power & free systems. Exit switches divert a carrier by manual or automatic control and merge switches that do not require an actuator for operation.



## WEBB-STILES - Power & Free Accessories

A complete line of Power & Free components are available for Webb-Stiles Power & Free Conveyors.

- MOMENTARY PORK CHOP ACTUATORS
- SKI-BAR MAINTAINED ACTUATORS
- LOAD BARS AND LOAD PINS
- LOWERATOR STATIONS

- PRODUCT CARRIERS
- AUTOMATIC LOADERS AND UNLOADERS
- ANTI-BACKUPS AND RUNAWAYS
- TAKE-UPS AND AIR PUSH-THURS

**COMPLETE DESIGN, ENGINEERING, CONTROLS, INSTALLATION, AND START-UP FOR TURN-KEY SYSTEMS**