



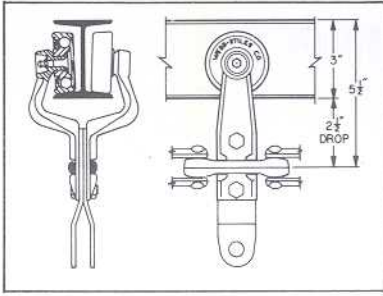
# **WEBB-STILES**

INDUSTRY STANDARD THREE, FOUR AND SIX INCH  
**OVERHEAD TROLLEY**



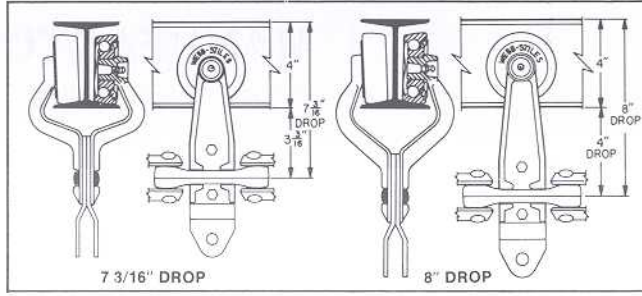
MANUFACTURERS OF ENGINEERED CONVEYOR SYSTEMS

### 3" FORGED TROLLEY



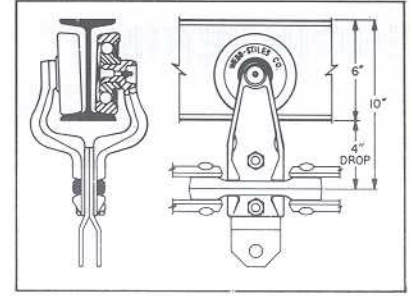
Webb-Stiles 3" forged ball bearing trolley assemblies are recommended for relatively light loads. The trolley has a load rating of 180 to 220 pounds and higher in some applications. For slow operation without vertical curves a load of 300 pounds can be carried. Standard trolley wheels are Full Ball Compliment-sealed. Other trolley wheels are available as options. Size X-348 chain is standard with trolley spacing from 6" centers or any multiple up to 30". The "H" attachment is standard. Optional pendant, loadbar or dummy attachments are available.

### 4" FORGED TROLLEYS



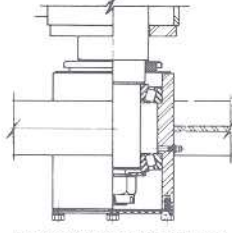
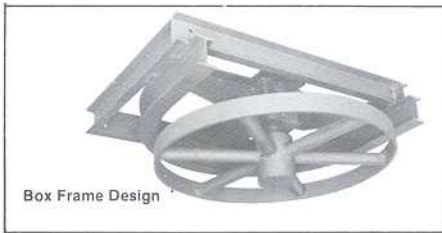
4" overhead trolley conveyor is the most popular of all conveyors in use today. It is the standby of the automotive and other industries due to its versatility and flexibility. Webb-Stiles 4" trolley assemblies are heavy-duty forged steel brackets with ball bearing wheels swagged to the arms. For ordinary service, a maximum load of 380 to 400 pounds per trolley can be carried. For slow operations without vertical curves loads of 500 pounds can be used. Trolleys are available in two different sizes of drops, 7-3/16" and 8" for compatibility with most systems in operation. Standard trolley wheel is the Full Ball Compliment-sealed. Other trolley wheels are available. X-458 chain is standard from 8" centers or any multiple up to 32". Standard attachment is "H". Optional pendant, loadbar or dummy attachments are available.

### 6" FORGED TROLLEY



Webb-Stiles 6" forged ball bearing trolley assemblies are designed for heavy-duty operating conditions. The trolleys have an exceptionally high load rating capacity of 1200 pounds and higher in some applications. By the use of load bars extremely heavy loads are possible. Standard trolley wheels are Full Ball Compliment-sealed. Other trolley wheel configurations are available. X-678 chain is standard on 12", 24" or 36" centers. Standard attachment is "H". Pendant, loadbar or dummy attachments are available.

### 3", 4", 6" TRACTION WHEEL TURNS

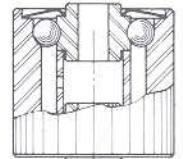
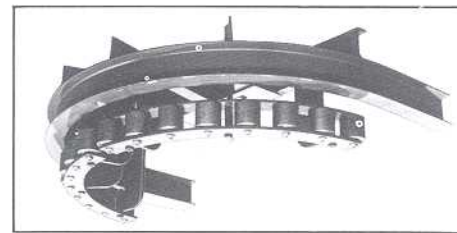


Box Frame Design

Tapered Roller Bearing Hub

Although normally more expensive than roller turns, traction wheel turns provide improvements in operation through reduced chain wear and chain pull, smoother operation at lower speeds and less maintenance. Webb-Stiles traction wheels are of solid plate or spoke type. Traction wheels over 48" are spoke only. Solid plate over 48" is optional. Standard turns are 30, 45, 60, 90 and 180 degrees. Any degree can be provided optional. Two types of hubs are available: tapered roller bearing and graphited bearing. "T" frame or four point mounting box frame designs are available.

### 3", 4", 6" ROLLER TURN TURNS



Standard Roller Turn Roller

Roller turns are generally the most cost effective for support around horizontal turns. They are widely used and provide satisfactory performance in most conveyor installations. Webb-Stiles standard roller turns are available in 30, 45, 60, 90 and 180 degree segments and radii. Special degree and radii segments are available optionally. Webb-Stiles roller turns are precision jig welded with ample capacity to withstand chain pull. The rollers are mounted on close centers between curved bars. Standard rollers are Full Compliment type and greasable. Sealed for Life and graphalloy rollers are available as options.

### TRACTION WHEEL OR ROLLER TURN TAKE-UPS



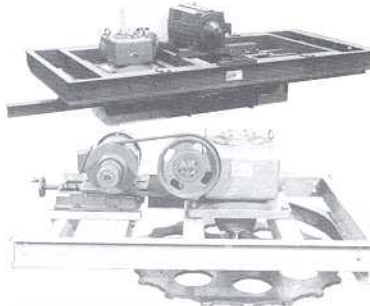
Take-ups should be considered a necessity for satisfactory conveyor operation. Take-ups provide for chain wear resulting in chain stretch. Take-ups are available in traction wheel or roller turn configurations in two types: manual and automatic.

**SCREW:** This manual take-up is economical and adjusted manually by screws. This take-up is not recommended where conveyors run through ovens. It will also normally have some slack chain that may be objectionable.

**SPRING:** The spring type is the most economical automatic type available. It is identical to the screw type except that heavy coil springs replace the screws. The spring type is generally satisfactory for non-reversing systems, but not recommended for systems requiring a minimum amount of conveyor surge.

**AIR:** Air cylinder operated take-ups are recommended for conveyors that require a constant take-up tension. Air take-ups are mandatory on reversing systems and should be used in tandem.

### DRIVE UNITS

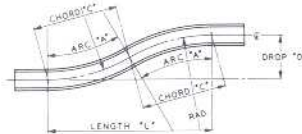


Conveyor drives are the most important components of all conveyor systems. Webb-Stiles drives are simple, rugged, dependable, and designed for maintenance free operation. Two standard conveyor drives are available - Caterpillar and Sprocket. Variable speed units with manual or electrical remote speed control are available.

**CATERPILLAR** drives are the most popular for overhead conveyors. They can be located in any straight run of track. This makes the proper drive and take-up relationship easier to achieve. Caterpillar drives are mandatory on systems having a heavy chain pull. Fixed or floating frame styles.

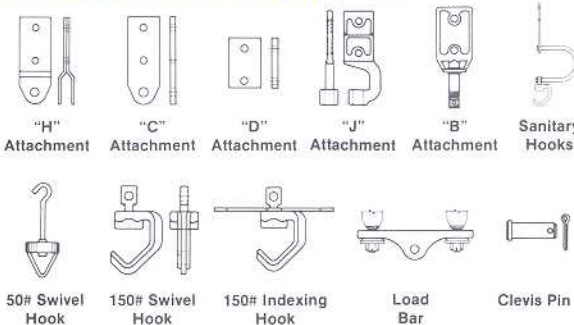
**SPROCKET** drives are of limited application, in that they must be located on a 90 degree or 180 degree horizontal turn. Sprocket drives have a large diameter steel sprocket keyed to the drive reducer output shaft. Larger reducers with heavier shafts and bearings are usually required.

### VERTICAL BENDS



Vertical bends are used to achieve various elevations. Bends are available in standard 20°, 30° and 45° angles of bend with standard radii of 5' to 20'. Custom bends can be made optionally. All bends are made without heating.

### TROLLEY ATTACHMENTS



"H" Attachment "C" Attachment "D" Attachment "J" Attachment "B" Attachment Sanitary Hooks  
50# Swivel Hook 150# Swivel Hook 150# Indexing Hook Load Bar Clevis Pin

### CHAIN



Webb-Stiles rivetless overhead conveyor chain is drop forged from high carbon steel and consists of three components; connecting pins, side links and center link. Individual links or sections can be easily replaced without tools. The chain is designed to flex for negotiation of horizontal and vertical curves. Three sizes are used.

X-348 - 3" pitch for 3" overhead trolley  
X-458 - 4" pitch for 4" overhead trolley  
X-678 - 6" pitch for 6" overhead trolley

### SAFETY STOPS



Webb-Stiles safety devices for vertical curves are designed for installation on inclines and declines. In case of chain breakage stop arms act as a positive stop to prevent runaway downhill travel. Stops are available with limit switches that will also stop the conveyor drive in event of chain breakage. Special safety devices are required for reversing systems.

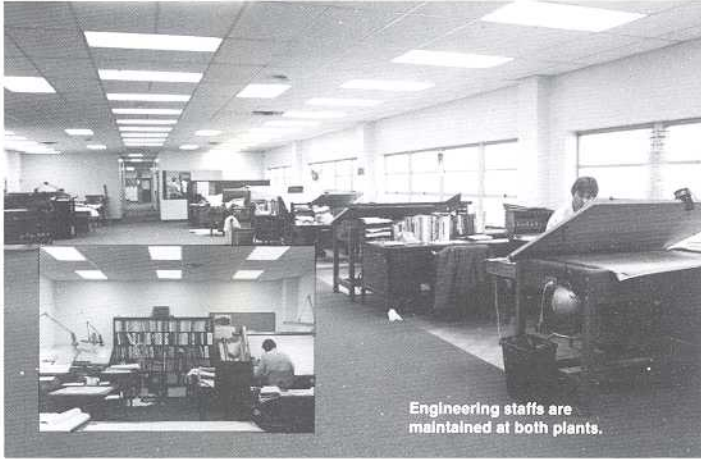
### EXPANSION JOINTS



Webb-Stiles track expansion joints are required for conveyor systems that pass through ovens to compensate for expansion caused by oven heat or other temperature changes that may cause distortion of the conveyor track.

# WEBB-STILES OFFERS FULL SERVICE ON OVERHEAD MONORAIL CONVEYORS

## ENGINEERING



Engineering staffs are maintained at both plants.

Webb-Stiles offers total in-house engineering capabilities for overhead trolley systems. We set the lead with the industry standards for overhead trolley conveyors. These standards are all pre-engineered eliminating the high costs of custom engineering and long deliveries. We can design extremely complex systems and also custom engineer components for special applications.

Webb-Stiles overhead systems can be readily expanded and modified at any time by the use of additional components and accessories. An in-depth guide on our 3", 4" and 6" systems feature layout, design and dimensional data that is easy to use and available on request.

Webb-Stiles exclusive computer chain pulls are used to accurately predict the size of drive(s) required in any overhead system. This analysis of your system assures you of the most efficient overhead system possible. We also do on-site chain pulls and evaluations for existing systems.

Webb-Stiles engineers can design and build controls to accurately match your handling needs.

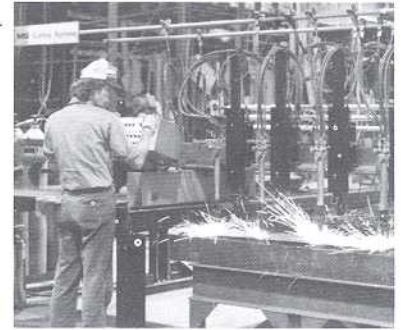


## MANUFACTURING

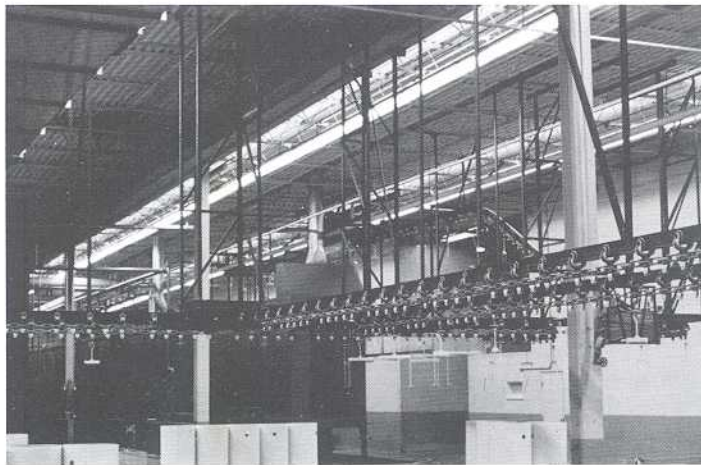


At Webb-Stiles, our two completely equipped plants enable us to handle all our fabrication work in-house. With up-to-date inventory controls and strict quality control standards, our modern manufacturing is geared for high volume production and cost savings. Our highly skilled craftsmen build your equipment using methods, machinery, jigs and techniques refined through years of practical experience. Webb-Stiles reputation for high quality is well-earned by delivering a superior product everytime.

Only the finest parts and materials are used in Webb-Stiles overhead conveyors like our special rolled I-beam track. On Hand at all times are large inventories of track, chain, trolleys and steel, etc., for fast on-time delivery. Webb-Stiles over 33 years in custom conveyor design, manufacture and installation is behind every component manufactured for overhead trolley.

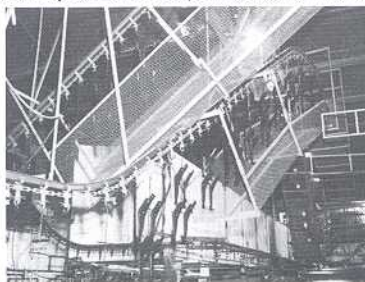


## INSTALLATION



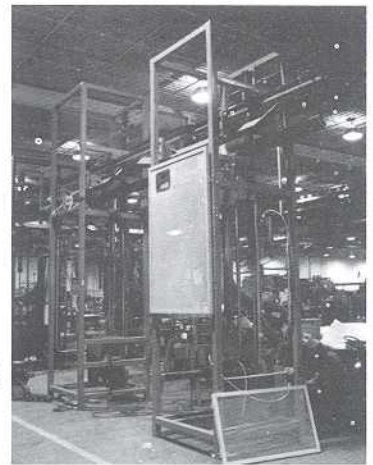
Webb-Stiles can handle field installation of your overhead conveyor system offering you a complete turn-key operation. A properly installed overhead conveyor system is of great importance for the smooth, trouble-free operation of the system. Webb-Stiles field installations are handled by one of our superintendents who is highly knowledgeable in overhead installations. He is responsible for handling a crew of skilled craftsmen familiar with the various trades of the industry.

Our engineers travel to many installations to direct the commissioning of sophisticated equipment and systems. We maintain a staff of senior project managers to oversee all major contracts.



## CUSTOM EQUIPMENT

Webb-Stiles specializes in custom designed and built conveyor equipment. Our highly skilled engineers design many special components for various overhead applications. Custom turns, take-ups and drives are a few of the items. We also design and build sophisticated accessories like automatic load and unload equipment, special paint systems and other accessories to meet your special needs.



## READI-SHIP SERVICE

Readi-Ship is part of our continuing commitment to provide our customers with the finest products and services available today. The most popular sizes and styles of overhead components are shipped direct from stock, many in just 2 days. The remainder are stocked in various stages of fabrication so they can be promptly assembled and shipped as needed. By utilizing state-of-the-art inventory controls and manufacturing methods, we are able to offer this amazing service without sacrificing the high quality for which we are known.



# Webb-Stiles, a whole world of conveyor equipment.



- |                          |                        |                        |
|--------------------------|------------------------|------------------------|
| Accumulating Conveyors   | Gravity Conveyors      | Retarding Conveyors    |
| Apron Conveyors          | Guided Pallet          | Roller Conveyors       |
| Ball Tables              | Herringbone Roller     | Roller Flight          |
| Belt Driven Live Roller  | Hydraulic Conveyors    | Roller Slat            |
| Belt Conveyors           | Inclined Reciprocating | Roller Chain           |
| Bolsters                 | Live Roller            | Shuttle Conveyors      |
| Carriers                 | Lineshaft              | Slat Conveyors         |
| Cart-Trac                | Live Storage           | Sortation Conveyors    |
| Carrousel                | Merge Sections         | Speed-Lift Conveyors   |
| Cat Drives               | Overhead Trolley       | Spindle Conveyors      |
| Chain Conveyors          | Pallet Collectors      | Tow Line Conveyors     |
| Chain Driven Live Roller | Pallet Conveyors       | Takeups                |
| Chain Transfers          | Pallet Dispensers      | Transfer Cars          |
| Cleated Belt             | Pickup & Delivery Sta. | Turnover Devices       |
| Converging Sections      | Platform Conveyors     | Troughed Roller        |
| Diverter                 | Portable Conveyors     | Turntables             |
| Downenders               | Power & Free           | Upenders               |
| Drag Chain Conveyors     | Power Curves           | Vertical Continuous    |
| Fixture Conveyors        | Pusher Bar             | Vertical Reciprocating |
| Floor Conveyors          | Pusher Chain           | Walking Beam           |
| Gate Sections            | Reciprocating Beam     | Wire Mesh              |

**\*ENGINEERING**

**\*MANUFACTURING**

**\*INSTALLATION**



## OVERHEAD TROLLEY

A complete line of industry standard 3", 4" and 6" overhead trolley systems, components and accessories. Large inventory of components available immediately under our Read-Ship program.



## ALL TYPES OF CONVEYORS

We engineer and manufacture a complete line of gravity, chain driven, belt driven and lineshaft roller conveyors. Also belt, chain, slat and fixture. Request our Design Guide.



## POWER & FREE CONVEYORS

Webb-Stiles offers Over & Under and Side-Push Power & Free systems in 3", 4" and 6" combinations. Complete engineering, manufacturing and installation for turn-key operation.



## CUSTOM CONVEYORS

Webb-Stiles specializes in all kinds of custom conveyors and material handling equipment. Our reputation for rugged, heavy-duty equipment assures you of defect free, dependable and trouble-free operation.

## THE WEBB-STILES COMPANY

The Webb-Stiles Company was founded in 1956 and specializes in custom designed material handling systems. The company has grown and expanded over the past 40 years culminating with our main plant and corporate headquarters in Valley City, Ohio (just south of Cleveland) and our Southern division in Gadsden, Alabama.

We maintain engineering staffs at both locations with many years of conveyor experience in the mechanical, structural and electrical disciplines. The two plants consist of over 300,000 square feet enabling Webb-Stiles to handle all its fabrication work in-house.

The volume and diversity of conveyors manufactured by Webb-Stiles continually expands. It now includes many standard items, as well as a wide variety of specialty units.

Webb-Stiles also manufactures and installs all types of overhead trolley and Power & Free conveyors along with a complete range of floor conveyors of all types. We maintain sales engineers in our Valley City and Gadsden plants with sales offices in Atlanta and Nashville. For more information or assistance, please feel free to contact any of our offices.



*Webb-Stiles Company, main plant and corporate offices in Valley City, Ohio.*



*Webb-Stiles of Alabama, southern division in Gadsden, Alabama.*



## WEBB-STILES COMPANY

Main Plant and Corporate Offices  
675 Liverpool Drive  
P.O. Box 464  
Valley City, Ohio 44280  
Phone: 330-225-7761  
Fax: 330-225-5532  
E-Mail [Webb-Stiles@worldnet.att.net](mailto:Webb-Stiles@worldnet.att.net)

Webb-Stiles of Alabama  
Southern Division  
700 Industrial Parkway  
P.O. Box 2608  
Gadsden, Alabama 35903  
Phone: 256-492-6642  
Fax: 256-492-7300